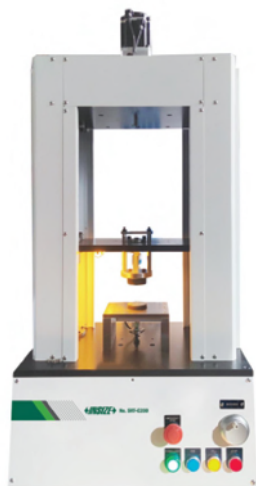


AUTOMATIC SPRING TESTING MACHINES

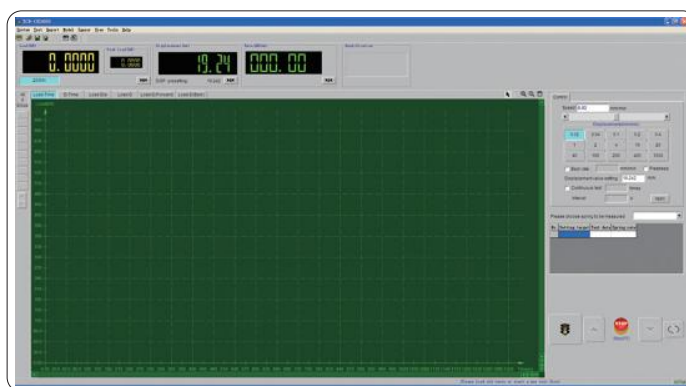


SRT-C200



SRT-C10K

- Applicable to all types of springs tension, compression tests
- Utilize high-strength load frame structure equipped with four lead screws and two guide columns to ensure stable and reliable loading
- Automatic zero seeking function
- Force unit: N, kg, lb, displacement unit: mm, in
- Test data and curve can be stored automatically, test report can be generated automatically
- With force overload protection, beam limit position protection, overload protection



computer and software (included)

SPECIFICATION

| Code | SRT-C10 | SRT-C50 | SRT-C100 | SRT-C200 | SRT-C500 | SRT-C1K | SRT-C2K |
|---------------------------------|--|---------|----------|----------|---------------------|---------|---------|
| Max. test force | 10N | 50N | 100N | 200N | 500N | 1KN | 2KN |
| Range of test force | 1%-100%FS | | | | | | |
| Resolution of test force | 1/100000FS | | | | | | |
| Accuracy class | 0.5 class | | | | | | |
| Accuracy of test force | ±0.5% of indicating value | | | | | | |
| Range of displacement speed | 0.01~500mm/min | | | | | | |
| Resolution of displacement | 0.01mm | | | | | | |
| Accuracy of displacement | ±(50+0.15L)μm (Note: L is the distance between two compression fixtures, mm) | | | | | | |
| Max. compression spring height | 350mm | | | | | | |
| Max. tension space | 350mm | | | | | | |
| Diameter of compression fixture | Φ50mm | | | | Φ120mm | | |
| Power supply | AC 220V, 50Hz, 300W | | | | AC 220V, 50Hz, 600W | | |
| Dimension (W × D × H) | 700×330×830mm | | | | 700×330×830mm | | |
| Weight | 70kg | | | | 170kg | | |

SPECIFICATION

| Code | SRT-C5K | SRT-C10K | SRT-C20K | SRT-C50K |
|---------------------------------|--|----------|----------|----------|
| Max. test force | 5KN | 10KN | 20KN | 50KN |
| Range of test force | 1%-100%FS | | | |
| Resolution of test force | 1/100000FS | | | |
| Accuracy class | 0.5 class | | | |
| Accuracy of test force | ±0.5% of indicating value | | | |
| Range of displacement speed | 0.01~500mm/min | | | |
| Resolution of displacement | 0.01mm | | | |
| Accuracy of displacement | ±(50+0.15L)μm (Note: L is the distance between two compression fixtures, mm) | | | |
| Max. compression spring height | 750mm | | | |
| Max. tension space | 750mm | | | |
| Diameter of compression fixture | Φ200mm | | | |
| Power supply | AC 220V, 50Hz, 1200W | | | |
| Dimension (W × D × H) | 750×830×1500mm | | | |
| Weight | 250kg | | | |

STANDARD DELIVERY

| | |
|---------------------|-------|
| Main unit | 1 pc |
| Computer | 1 set |
| Software | 1 set |
| Printer | 1 pc |
| Pull clamp | 1 set |
| Compression fixture | 1 set |